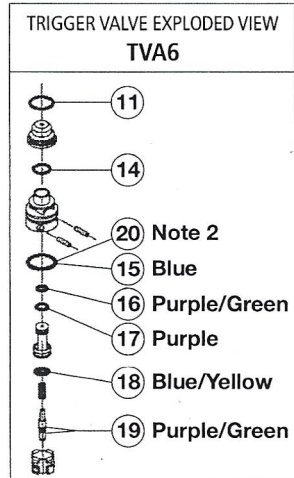
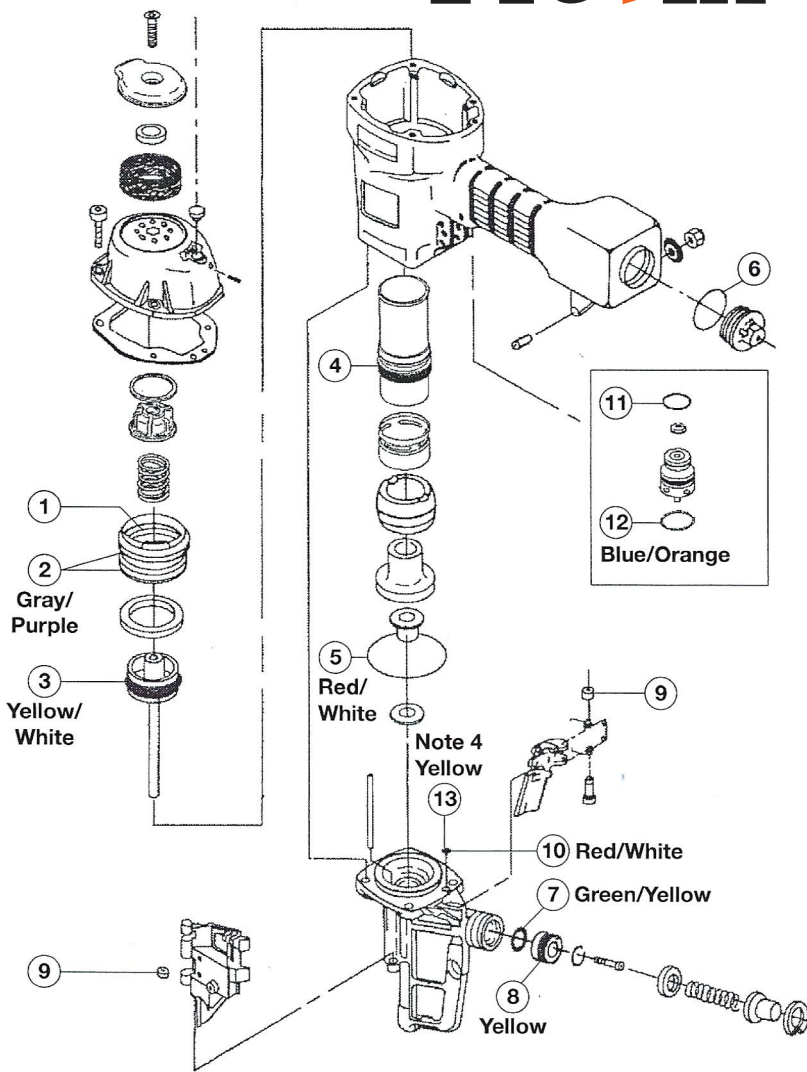


RELIABILITY™

Provin



Note 2: OR-PP-356 is an oversized o-ring for the outside diameter of the valve body. This can be used to tighten the fit in worn valve cavities.

Note 3: Position #5 and #10 are specified in older tools. New tools specify Bostitch part #106294 instead of these o-rings.

Note 4: OR-PP-945 is used on the N100S instead of OR-PP-1087.

Contents of O-Ring Kit KT-BO-100

Key #	Qty	Reliability Provin, Inc.			Equivalent BOSTITCH® Part Number	Key #	Qty	Reliability Provin, Inc.			Equivalent BOSTITCH® Part Number
		Part Number	Color Code	Notes				Part Number	Color Code	Notes	
1	1	OR-PP-883			MRG051531	11	2	OR-PP-156			86459
2	2	OR-PP-1303	Gray/Purple		851538	12	1	OR-PP-1116	Blue/Orange		MRG019824
3	1	OR-PP-1040	Yellow/White		851539	13	1	OR-PP-945	Yellow	Note 4	T29047
4	1	OR-PP-420			RG273710	14	1	OR-PP-150			HH11151
5	1	OR-PP-1082	Red/White	Note 3	MRG070515	15	1	OR-PP-1020	Blue		851554
6	1	OR-PP-380			850235	16	1	OR-PP-6219	Purple/Green		MRG005819/HH11119
7	1	OR-PP-1012	Green/Yellow		MRG009824	17	1	OR-PP-1316	Purple		MRG006819
8	1	OR-PP-364	Yellow		851384	18	1	OR-PP-929	Blue/Yellow		MRG008819/HH11113
9	2	RE-WA-4			854004	19	2	OR-PP-6293	Purple/Green		MRG002514/HH11901
10	1	OR-PP-1087	Red/White	Note 3	MRG004216	20	1	OR-PP-356		Note 2	

*Generously grease all O-rings at time of assembly

Note: Read and understand the safety information printed on the reverse side before repairing any tools.
Nota: Lea y comprende la información de seguridad impresa al reverso antes de reparar cualquier herramienta.

8/1/2012

Exploded View and O-ring List for
BOSTITCH N100C, N100S, & N100C-1

VL-BO-100

CAUTION**CAUTION****CAUTION**

ALWAYS WEAR SAFETY GLASSES WITH SIDE SHIELDS WHEN USING PNEUMATICALLY OPERATED FASTENER DRIVING TOOLS

NEVER POINT THE TOOL AT YOURSELF OR ANYONE ELSE

NEVER BYPASS OR REMOVE ANY SAFETY DEVICE

ALWAYS FOLLOW THE ORIGINAL MANUFACTURE'S SAFETY AND SERVICE INSTRUCTION

NEVER ATTEMPT TO SERVICE OR REPAIR A PNEUMATICALLY OPERATED TOOL WITH THE COMPRESSES AIR LINE CONNECTED TO THE TOOL

NEVER LEAVE A PNEUMATICALLY OPERATED TOOL UNATTENDED WITH THE COMPRESSES AIR LINE CONNECTED

ALWAYS FOLLOW THE ORIGINAL TOOLS MANUFACTURE'S DISASSEMBLY, ASSEMBLY, AND TOOL INSPECTION PROCEDURES

PRECAUTION**PRECAUTION****PRECAUTION**

SIEMPRE USE LENTES DE SEGURIDAD CON PROTECTORES LATERALES AL USAR HERRAMIENTAS DE IMPULSO CON SUJETADOR DE OPERACIÓN NEUMÁTICA

NUNCA APUNTE A SI MISMO O A OTRA PERSONA CON LA HERRAMIENTA

NUNCA EVITE O RETIRE ALGÚN DISPOSITIVO DE SEGURIDAD

SIEMPRE SIGA LAS INSTRUCCIONES DE SEGURIDAD Y SERVICIO DEL FABRICANTE ORIGINAL DE LA HERRAMIENTA

NUNCA INTENTE HACER MANTENIMIENTO O REPARAR UNA HERRAMIENTA DE OPERACIÓN NEUMÁTICA CON LA LINEA DE AIRE COMPRIMIDO CONECTADA A LA HERRAMIENTA

NUNCA DEJE SIN ATENCION UNA HERRAMIENTA DE OPERACIÓN NEUMÁTICA CON LA LINEA DE AIRE COMPRIMIDO CONECTADA

SIEMPRE SIGE LOS PROCEDIMIENTOS DE DESMONTAJE, MONTAJE, E INSPECCIÓN DEL FABRICANTE ORIGINAL DE LA HERRAMIENTA

O-Ring Kit

KT-BO-100

For use on the following tool models.
Kit contains all O-Rings in these tools.

BOSTITCH

N100C

N100C-1

N100S

